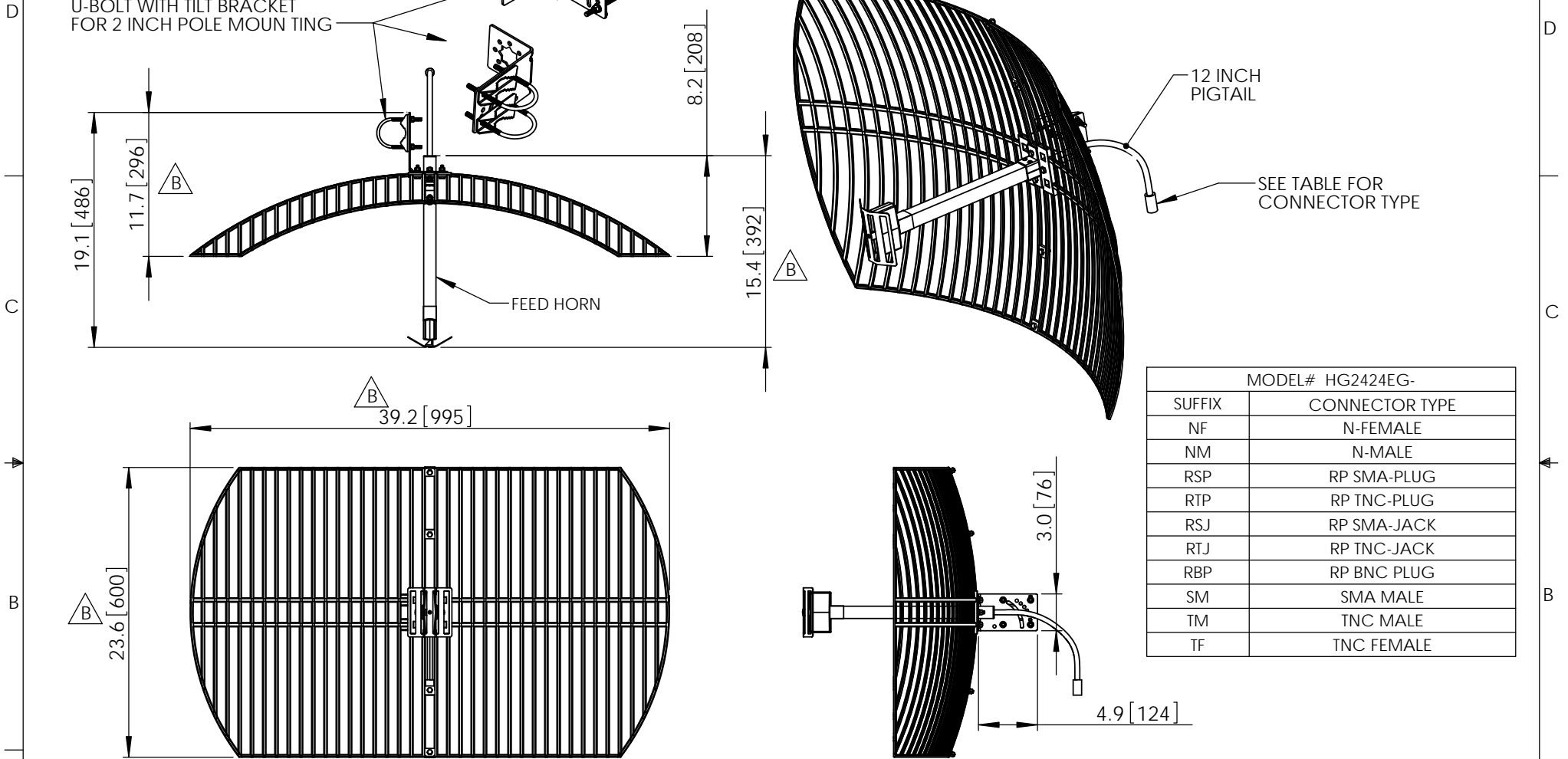


8 7 6 5 4 3 2 1

THE INFORMATION CONTAINED IN THIS DRAWING IS THE SOLE PROPERTY OF L-COM, INC. ANY REPRODUCTION IN PART OR WHOLE WITHOUT THE WRITTEN PERMISSION OF L-COM, INC. IS PROHIBITED.

| REVISIONS | | | |
|-----------|---------------------------------|----------|------------|
| REV | DESCRIPTION | DATE | APPROVED |
| A | INITIAL RELEASE | 1/11/12 | D.GRIFFIN |
| B | ECN 9013 UPDATE PER VENDOR SPEC | 12/20/17 | B.PUCHASKI |
| | | | |



| MODEL# HG2424EG- | |
|------------------|----------------|
| SUFFIX | CONNECTOR TYPE |
| NF | N-FEMALE |
| NM | N-MALE |
| RSP | RP SMA-PLUG |
| RTP | RP TNC-PLUG |
| RSJ | RP SMA-JACK |
| RTJ | RP TNC-JACK |
| RBP | RP BNC PLUG |
| SM | SMA MALE |
| TM | TNC MALE |
| TF | TNC FEMALE |

NOTES:

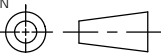
PACKAGING:

COMPONENT SHALL BE PACKAGED IN ACCORDANCE WITH L-COM SPEC PKG-0001

- ALL DIMENSIONS FOR REFERENCE -

REGULATORY COMPLIANCE:

CE2011/65/EU(RoHS DIRECTIVE)

| | | | | | | | | |
|---|--|--|----------|--|---|--------------------------|-----------------------------|------------------|
| UNLESS OTHERWISE SPECIFIED, DIMENSIONS ARE IN INCHES [mm] | APPROVALS | | DATE | | <div>L-com® Global Connectivity</div> <div>50 HIGH STREET NORTH ANDOVER, MA 01845</div> | | | |
| | DRAWN BY B.PUCHASKI | | 01/09/12 | | | | | |
| | CHECKED BY P.PESA | | 01/09/12 | | CATEGORY | | | |
| | APPROVED BY P.PESA | | 01/09/12 | | ANTENNA | | | |
| DIMENSIONAL TOLERANCES: .X = ±.1 [2.54] .XX = ±.01 [.25] .XXX = ±.005 [.13] | | | | | PRODUCT DESCRIPTION | | | |
| | CONFIGURATION DETAILS OF UNDIMENSIONED FEATURES MAY VARY | | | | 2.4GHz 24dBi GRID ANTENNA W/ CONNECTOR PIGTAIL | | | |
| ANGULAR TOLERANCES: ALL = ± 1° | | | | | | | | |
| PROJECTION  | COLOR VARIATIONS MAY OCCUR | | | | SIZE A | FSCM NO. 43321 | DWG. NO. HG2424EG | REV. B |
| | | | | | SCALE: NONE | | CAD FILE: HG2424EG.SLDDRW | |