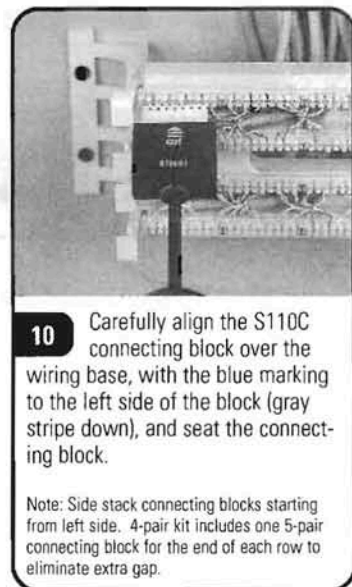
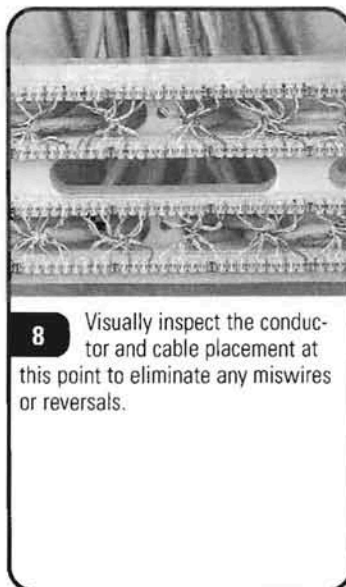
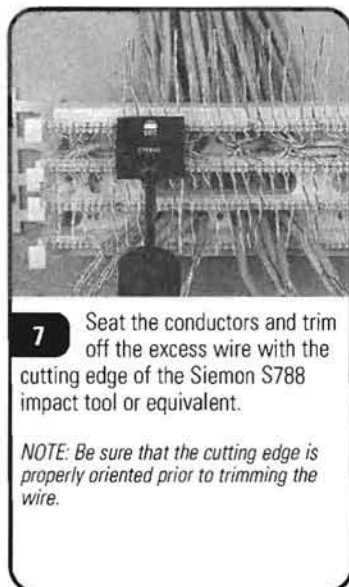
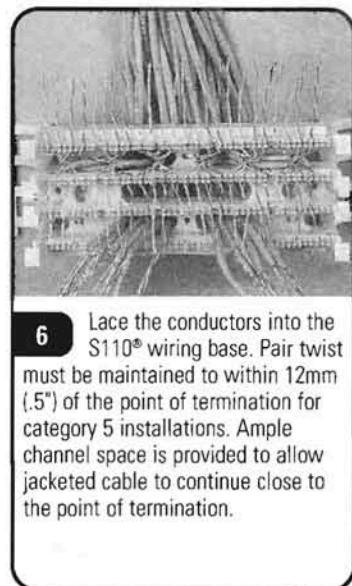
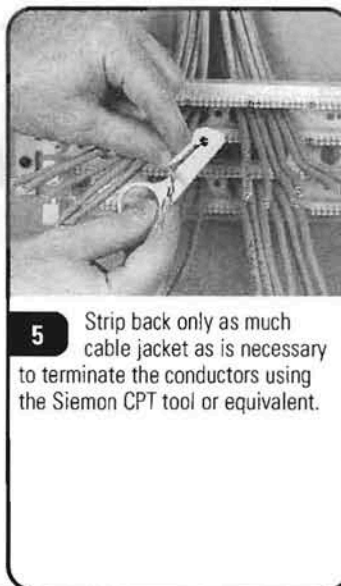
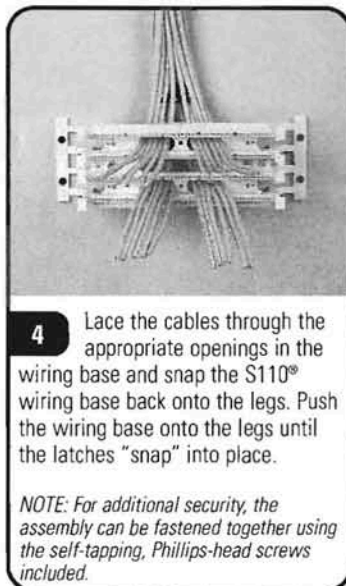
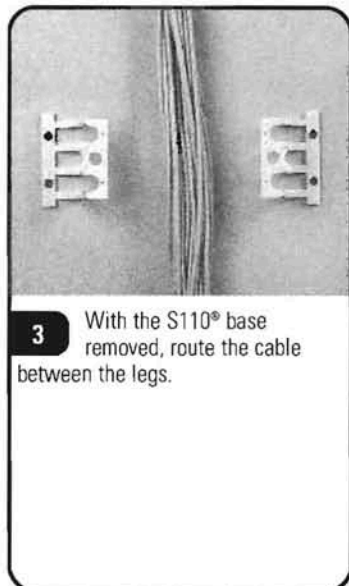
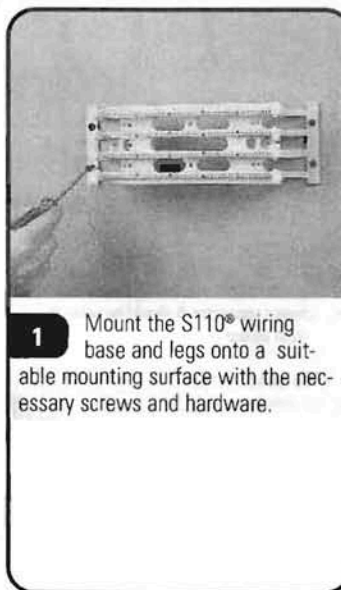
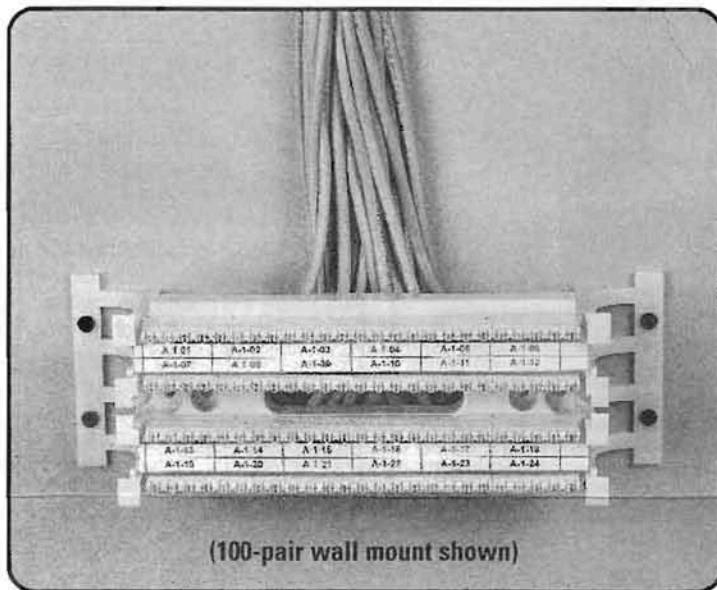
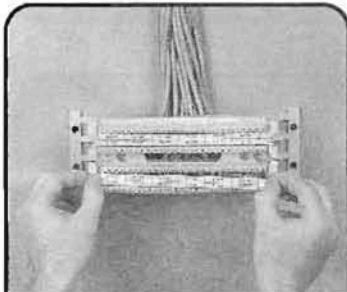


# S110 Wiring Block Instructions

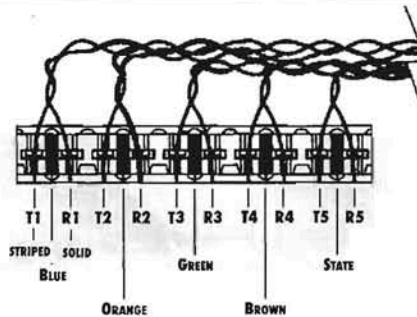


# S110 Wiring Block Instructions



- 11** Label the circuits then slide the designation strip into the S110-HLDR and snap the holder onto the wiring base. Complete the connections using CJ5 series cross-connect wire or S110P patch cables.

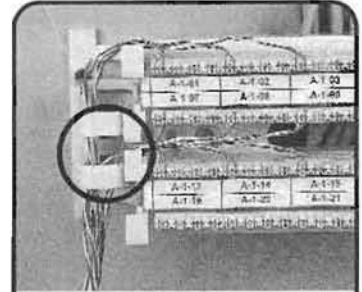
*NOTE: Remove designation strips prior to removing base from legs.*



**12**

The S110C connecting block is a double-ended, insulation displacement connector. It should be noted that only 22 through 26 AWG (0.64-0.40mm) insulated wire should be used with this connector.

Once the connecting blocks have been seated and designation strips snapped into place, cross-connection wires can be terminated to the top of the S110C connecting blocks. Arrange wires as shown and terminate using Siemon Company P/N S814 or S788 impact tool or equivalent. The Siemon S788 impact tool may also be used for both terminating wires to the top of all 110C-type connecting blocks, and for seating connecting blocks. Make sure all conductors have been completely seated into the wire slots and trim any excess wire using the cutting edge of either impact tool.



**13**

The Siemon S100A2 vertical wire manager can be ordered separately and mounted to the legs of the S110 to provide vertical cable management for S110® patch cords or cross-connect wire.

## To assist safe installations, comply with the following:

- Use caution when installing or modifying telecommunications circuits.
- Never touch uninsulated wire terminals unless the circuit has been disconnected.
- Never install this device in a wet location.
- Never install wiring during a lightning storm.



**Global Headquarters**  
Watertown, Connecticut USA  
Tel: (1) 866-548-5814

For a complete listing of our global offices visit our web site



[www.siemon.com](http://www.siemon.com)